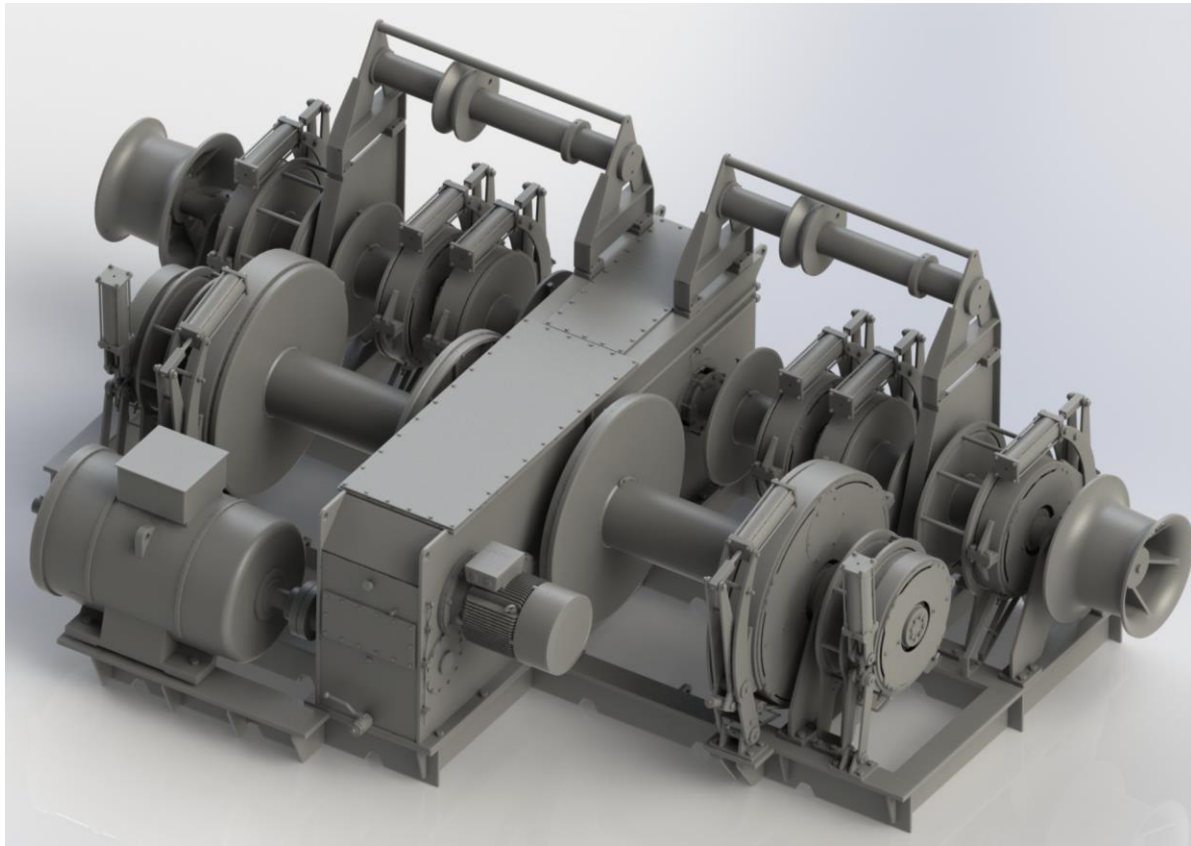


FISHING WINCHES



NEW STANDARD IN WINCH TECHNOLOGY

Thanks to the huge experience in winch technology combined with the experiences of fisherman. The brand Ridderinkhof became in the 70's the leading winch manufacturer in the North Sea twin beam trawler fleet industry. The success of that time reflects the quality of today, after 30-35 years of operating 24 hours/day and 6 days a week most of the winches are smooth and silent as always, without require major service.

THR Marine is continuing with these winches on the market. Our beam trawler winches are more or less standardized in power, drum capacities and more, but due to the fact that fishermen have own ideas the number of drums and the configuration per winch may vary per ship owner / ship designer.

FEATURES

- Motor power till 400 Hp
- Customizing drum sizes within our standard ranges
- Both electric or hydraulic driven and controlled.
- Gear drive in an oil bath gearbox, gearwheels very well accessible for service
- Designed for easy servicing and short lead times on spares.
- Electric emergency motor and harbour drive.
- Seals are on exchangeable sleeves to prevent wear on the main shaft.
- Seawater resistant aluminium brake and clutch cylinders with stainless steel pistons rods.
- Spooling gears.
- Guiding sheaves.

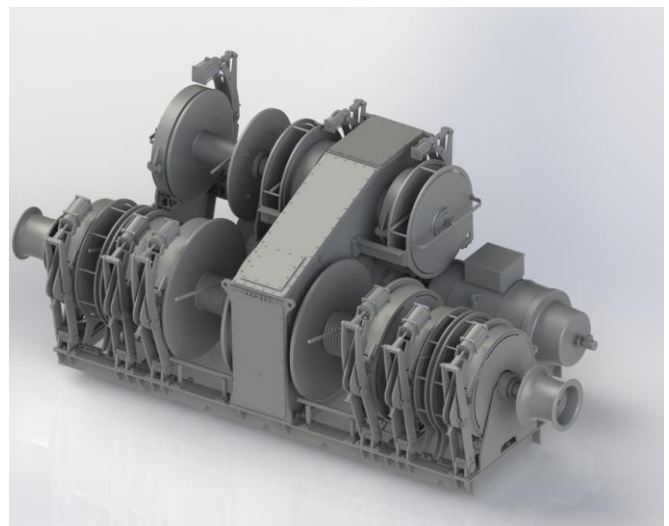
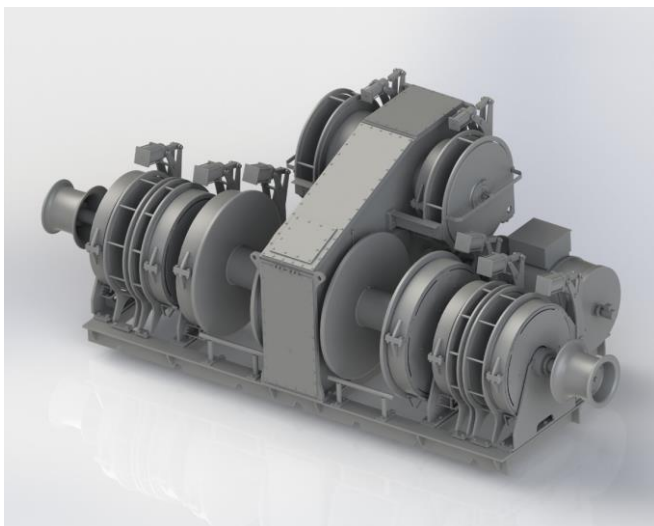
SPECIFICATIONS

Capacity

| | | |
|-----------------|------------------|---------|
| Twin rig drums | 500 – 750 meter | Ø28 mm. |
| Slip hook drums | 100 – 130 meter | Ø28 mm. |
| Jumper drums | 050 – 075 meter | Ø28 mm. |
| Boom drums | 100 – 125 meter | Ø32 mm. |
| Fishing drums | 850 – 1000 meter | Ø32 mm. |

Loads

| | |
|-------------------|--|
| Fishery line pull | 2x 10 tonnes @ 45 m/min on average layer |
| Fishery line BHL | 2x 30 tonnes on average layer |



Specifications up to customer requirements is always possible.